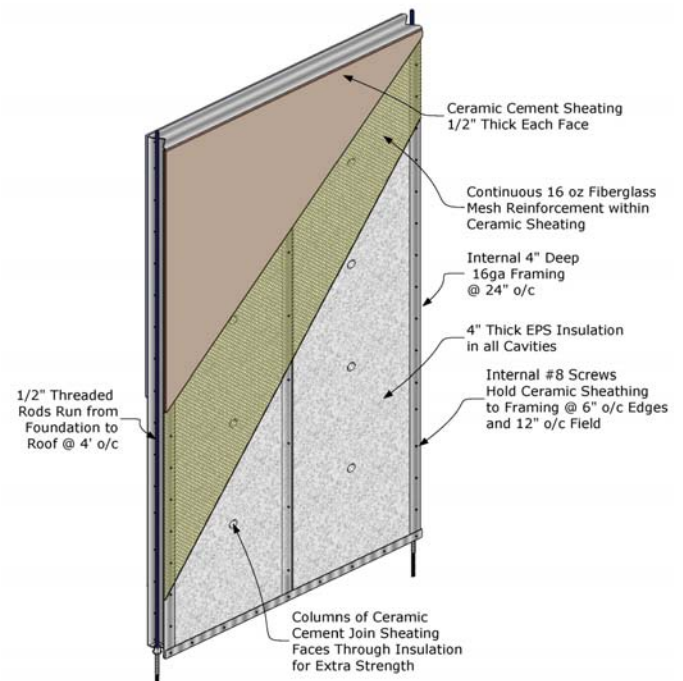


Priton Housing System



DCM serves as the exclusive designer of record to develop new housing models for a proprietary panelized wall system. The manufacturer and installer developed this quick-build, prefabricated construction system with the goal of creating high-quality, affordable housing around the globe, particularly in areas with a high demand for low-income housing. It took just 12 days to build the first homes and to date, over 1000 have been built in Turks & Caicos, and 350 on Nassau Island in the Bahamas.

The homes are available in 64, 96, 100, and 140 square meter (646, 861 and 1,076 square feet) layouts and designed so one single wall can house all the utility installations.

TECHNICAL SPECIFICATIONS

Project: Priton Housing System

Client: Priton

Year(s): 2014 - 2016

Location: Turks & Caicos, Nassau Island

Area: Varies

Type of Project: New Construction

Role: Design Architect and Engineer of Record

